

ORDER PHOLIDOTA**Family MANIDAE****(Pangolins or scaly anteaters)**

Superficially these mammals show convergences in form and habits toward New World anteaters (p.134) and armadillos (p.138). However, they differ from the latter both externally and internally. In outward appearance they resemble an animated pine cone that tapers gradually toward both ends. Numerous overlapping scales cover the upper parts, head, tail, and limbs (except the forelimbs in two species). The scales are sharp-edged and keeled or striated. The belly is furred. They lack teeth and several cranial bones which are common to most other mammals (see below). The skull is shown in Fig. 63.

Pangolins are nocturnal and arboreal or terrestrial. Arboreal forms have a prehensile tail. They shelter in tree hollows

or burrows. The diet consists of ants and termites, which are obtained by the extremely long tongue connected at its base to long posterior processes of the sternum. Gravel in the gizzard-like stomach aids digestion. Pangolins roll up into a ball to protect themselves.

These animals occur singly or in pairs. Males are larger than females. One (occasionally two) young are produced.

Pangolins are prized as food by man. Their scales are used for medicinal and ornamental purposes.

One genus, 8 species; southeast Asia, Africa south of the Sahara.

Recognition Characters:

1. size medium (65-175 cm).
2. **body covered with large overlapping scale-like plates.**

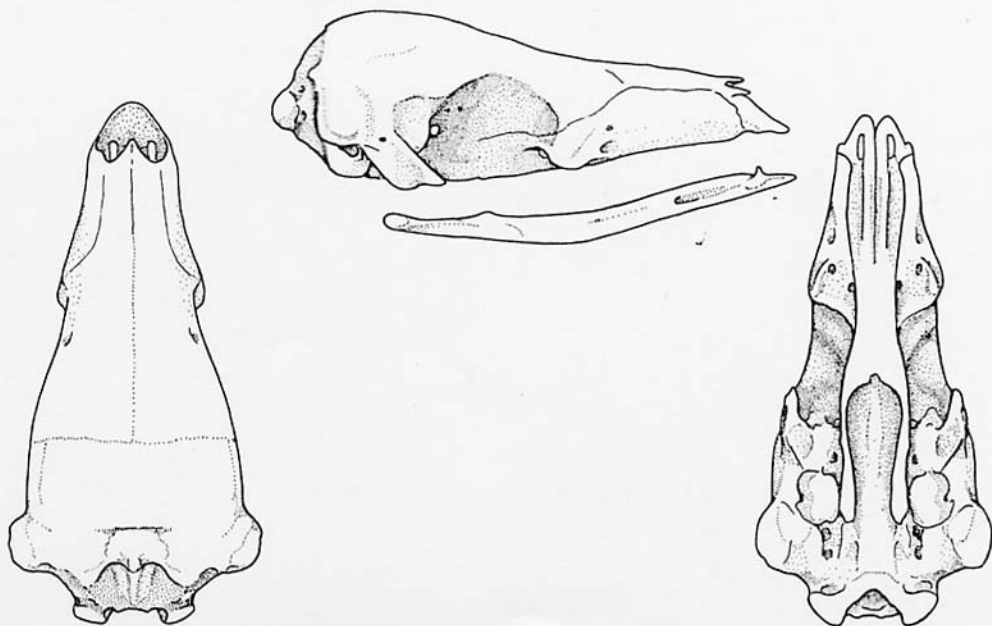


Figure 63. Skull of a manid (*Manis*, x 2/3).

3. forefoot with three principal digits, hindfoot with five; all digits well clawed.
- 4-5. no teeth (Fig. 63).
6. zygomatic arch incomplete (Fig. 63).
7. no jugal, lacrimal, or interparietal bones.
8. pterygoids separate, not forming part of palate (Fig. 63).
9. no extra zygapophyses on vertebrae.

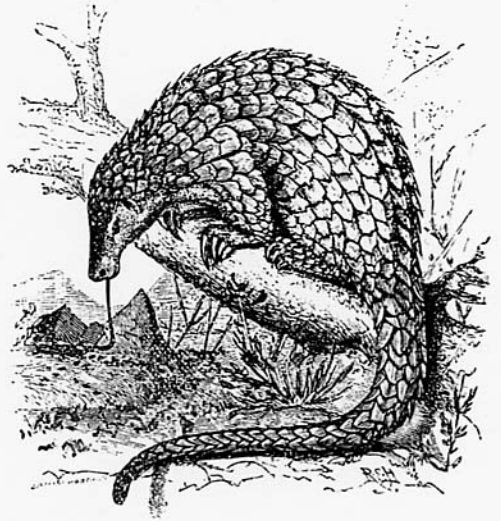
Dental formula: no teeth.

Compare with: Myrmecophagidae and Dasypodidae (Edentata).

Genus:

Manis (8) - Pangolins or scaly anteaters;
M. gigantea is the giant pangolin of Africa.

Remark: Kingdon (1971a) summarized the habits of African species.



Pangolin.